



Wonder Bar™

# Getting Started with WonderBar™

Unity Media Group  
March 2011

# Getting Started with WonderBar

---

## Table of Contents

Step 1: Download and Install WonderBar™ .....	3
Step 2: Accessing the Desktop Application .....	5
Step 3: Content Panel Overview .....	7
Step 4: Comments.....	8
Step 5: Share .....	9
Step 6: Preferences .....	10
Step 7: My Channels.....	11
Step 8: Manage Channel .....	12
Step 9: Subscribe & Unsubscribe to Channels.....	13
Step 10: My Account.....	15
Step 11: My Settings .....	16

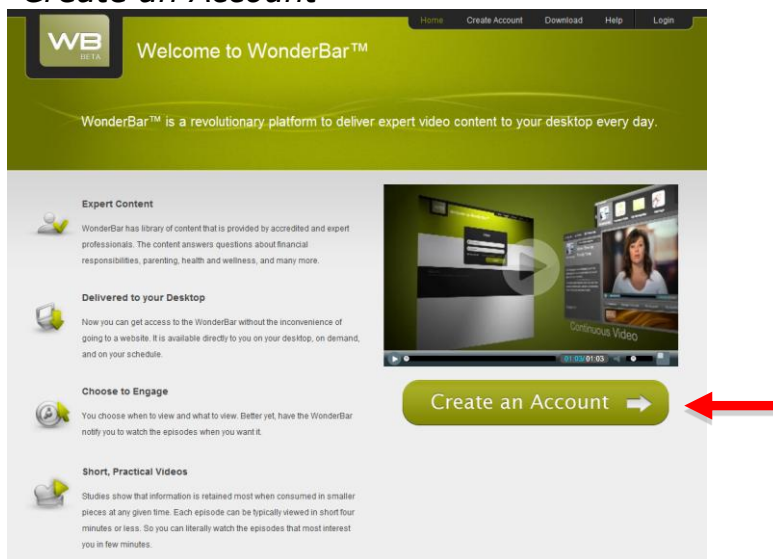
# Getting Started with WonderBar

## Getting Started on WonderBar™

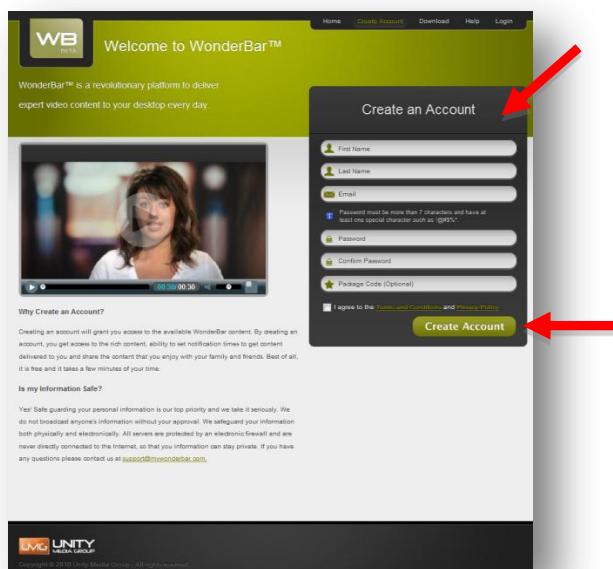
### Step 1: Download and Install WonderBar™

You can *Create an Account* for WonderBar™ through [unity.mywonderbar.com](http://unity.mywonderbar.com). To get started you can create your account and download the desktop application by following these steps.

- A. Go to [unity.mywonderbar.com](http://unity.mywonderbar.com), watch the video and click on *Create an Account*



- B. Complete each field on the form and click *Create Account*.



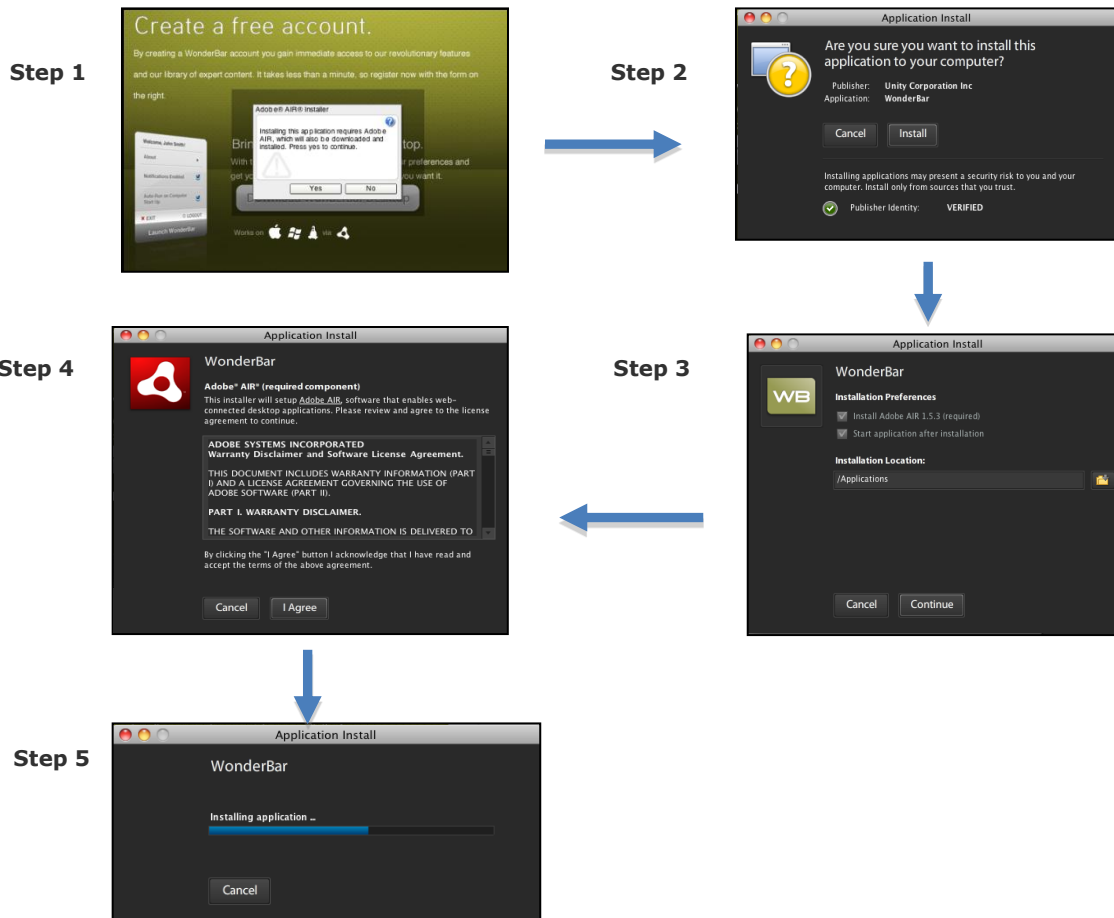
# Getting Started with WonderBar

## C. Click *Download WonderBar™*



## Installation Process

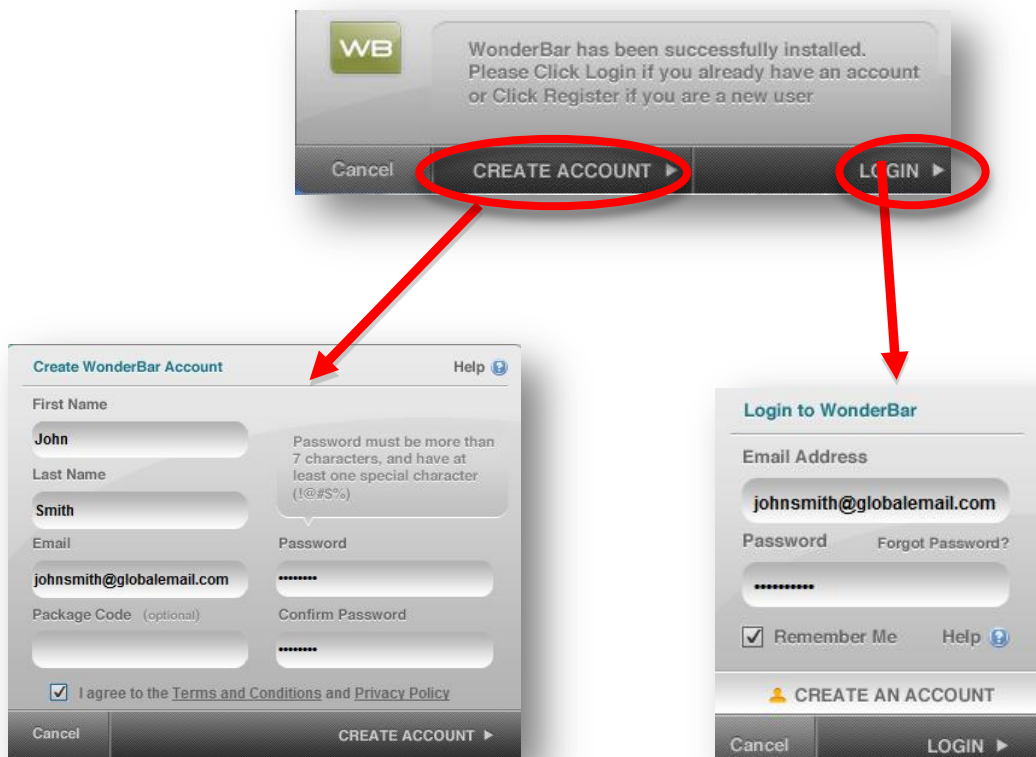
If Adobe™ Air is not installed on your computer, it will automatically install after selecting **Download WonderBar™**.



# Getting Started with WonderBar

## Step 2: Accessing the Desktop Application

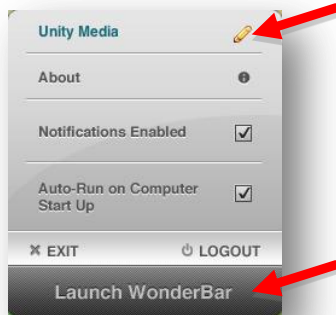
If you have not already created your account in WonderBar™ you can start by clicking on *Create Account* in the pop-up window and completing form fields. If you already have an account click *Login* to access WonderBar™.



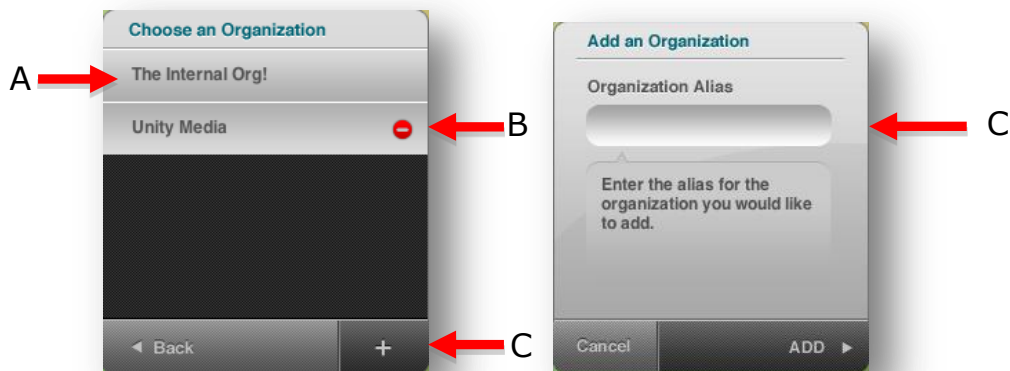
## Getting Started with WonderBar

---

- D. You are now logged into WonderBar™ and can manage organizations if you have more than one organization. Click “Launch WonderBar if you are ready to view WonderBar.

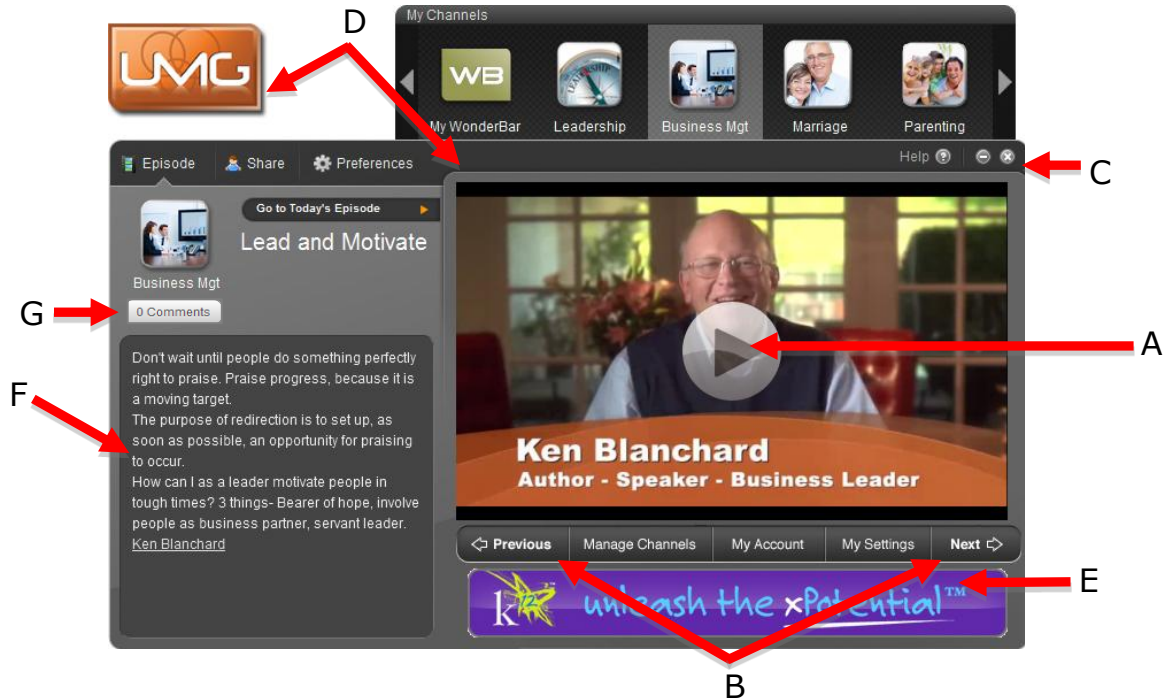


- E. You can switch organizations (A) by clicking that organization name, remove non-default organizations (B) by clicking the *minus sign* next to the organization's name, or add a new organization (C) by clicking the plus sign and entering the organization's alias in the pop-up window.



# Getting Started with WonderBar

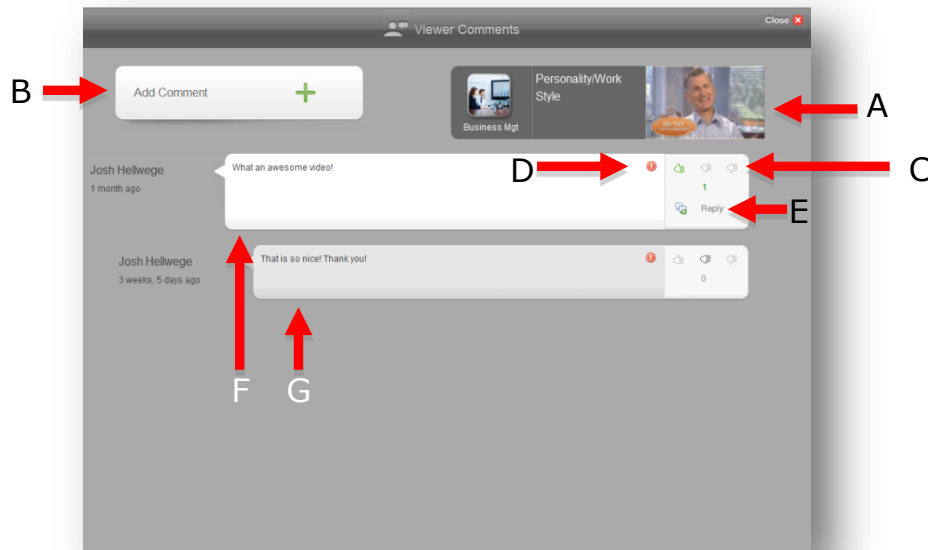
## Step 3: Content Panel Overview



- A. Click the *Play button* in center of video to play the Episode's video.
- B. You may click *Next / Previous* buttons to navigate more channel Episodes when they are available.
- C. To close, minimize, or enter a support ticket click on x, -, or Help (?) buttons respectively.
- D. To move the whole WonderBar™ window click and drag the Organizational Logo or Desktop Control Bar.
- E. Clicking the *Banner Ad* will open your internet browser to the advertised link.
- F. The related content for each of the videos you watch are on your left panel.
- G. "Comments" button allows users to enter comments for the particular episode viewing.

# Getting Started with WonderBar

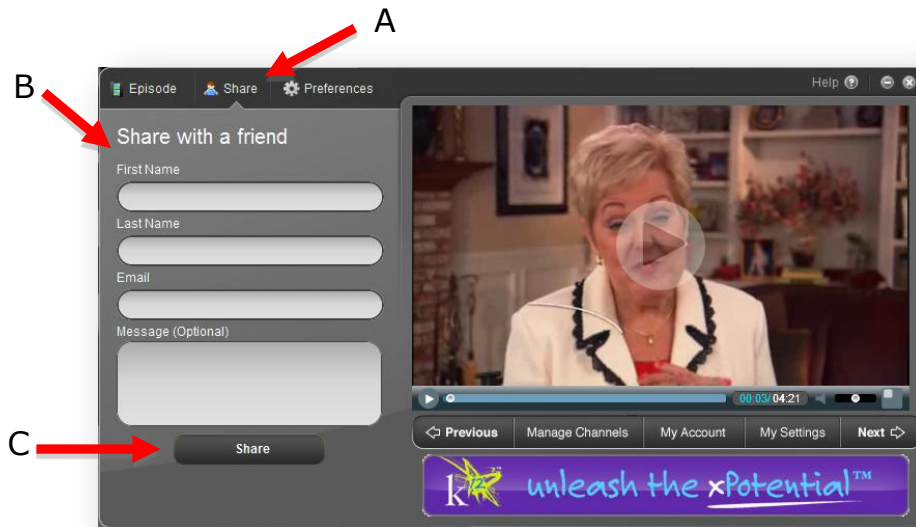
## Step 4: Comments



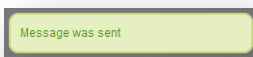
- A. Content information includes:
  - a. Channel Icon
  - b. Episode Title
  - c. Episode reference frame
- B. Click the *Add Comment* to Add a Comment in selected episode.
- C. Rate existing comments as Like, Neutral, or Dislike.
- D. Flag a comment to report abuse.
- E. To respond to a comment, click on *Reply*.
- F. Comment.
- G. Reply Comment.

# Getting Started with WonderBar

## Step 5: Share

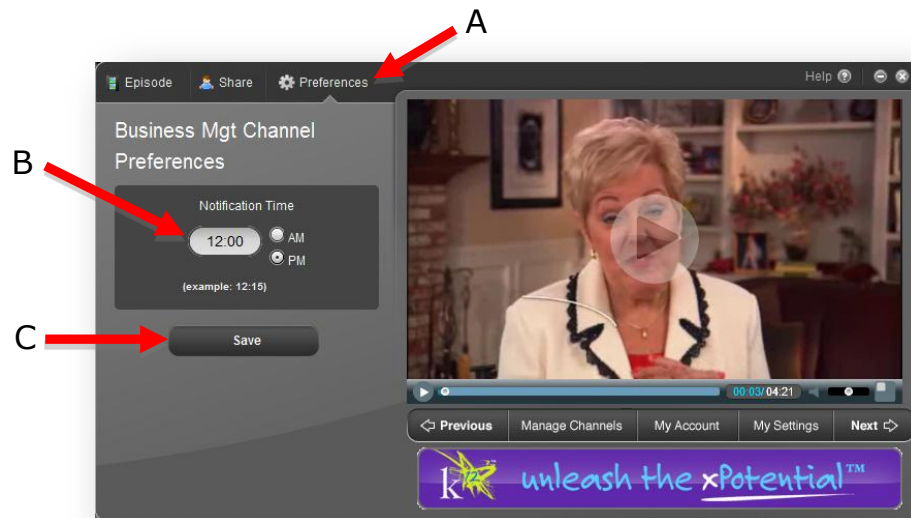


- A. To share an episode, click the *Share* tab in the top left panel menu bar.
- B. Complete the form with the recipient's information.
- C. Click Share.
- D. A confirmation that your message was sent will appear above the *Share with a friend* form.

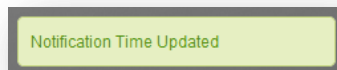


# Getting Started with WonderBar

## Step 6: Preferences



- A. To program a specific channel to send daily episodes, click *Preferences* tab in the top left panel menu bar.
- B. Set the time you wish to receive your regular notification for this channel.
- C. Click *Save*.
- D. A confirmation of the saved time will appear above the *Channel Preferences* form.



**NOTE:** You must install WonderBar™ Desktop Application in order to receive daily notifications.

# Getting Started with WonderBar

---

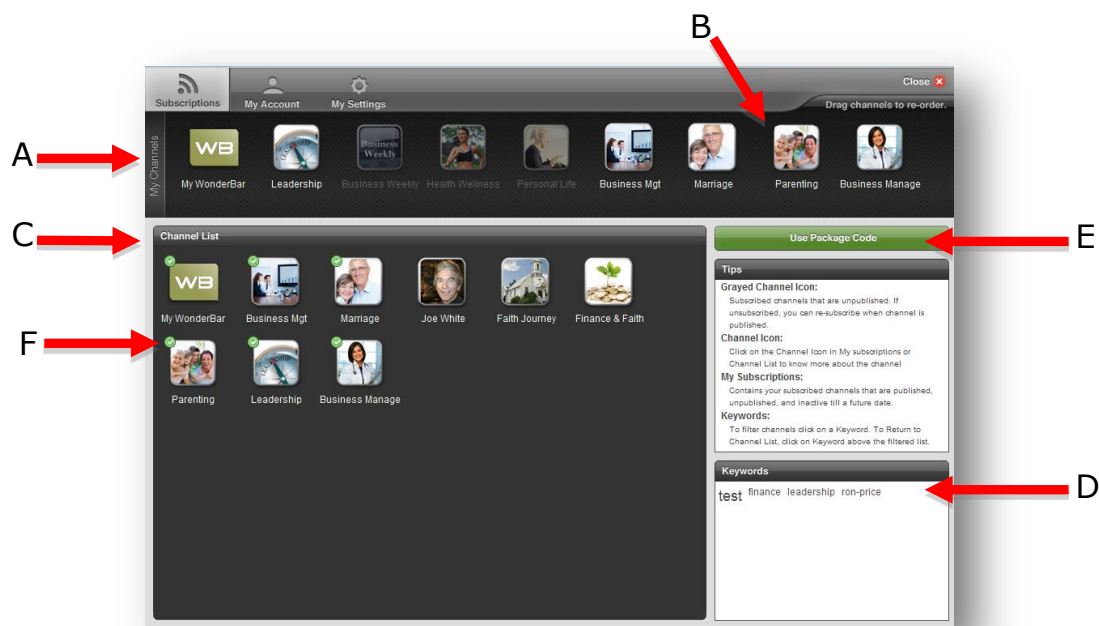
## Step 7: My Channels



- A. To browse all of your active channels (subscribed and published) use the right or left arrows located in *My Channels* at the top to scroll.
- B. Click icon of any channel to view episodes for that channel.

# Getting Started with WonderBar

## Step 8: Manage Channel

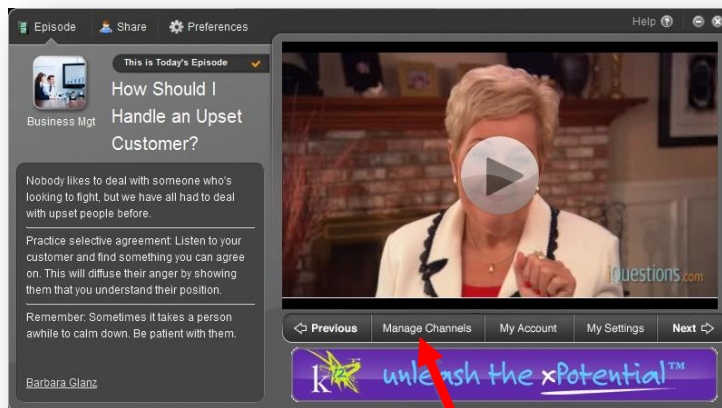


- A. All of the subscribed (active, inactive, published, or unpublished) channel are available in *My Channels*
- B. To re-order the *Channel icons* in your *My Channels* bar click and drag the icons to your preferred order. Changes will be reflected in *My Settings* automatically as well.
- C. "Channel List" has all of the available public channels you can subscribe.
- D. To search or filter all available channels click a keyword from available keywords.
- E. To subscribe to channels that are private or bulk, click the green *Use Package Code* button and enter package code.
- F. To quickly identify which channels you are subscribed to look for the green check next to the channel icon in the *Channel List*.

# Getting Started with WonderBar

## Step 9: Subscribe & Unsubscribe to Channels

- A. To subscribe or unsubscribe to channels of interest and organize them in your *My Channels*, click the *Manage Channels* button below any video.



A

- B. To subscribe to a channel, click the channel icon in the *Channel List* and you will be directed to *Channel Details*, then click *Subscribe*.

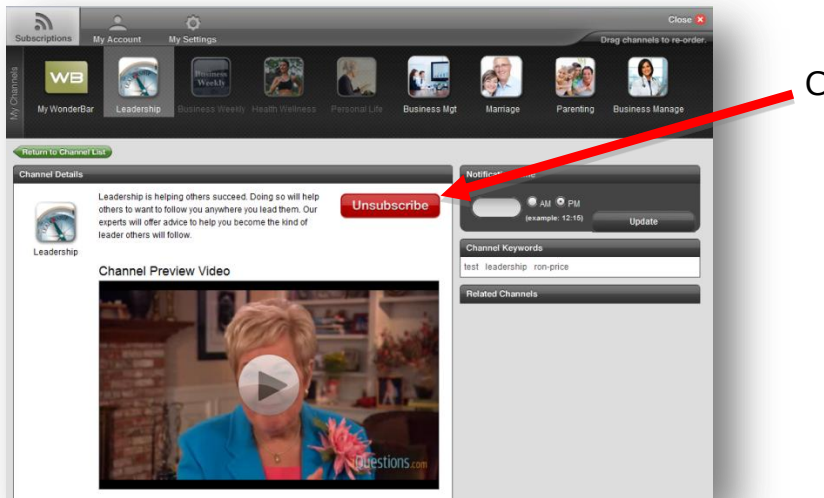


B

# Getting Started with WonderBar

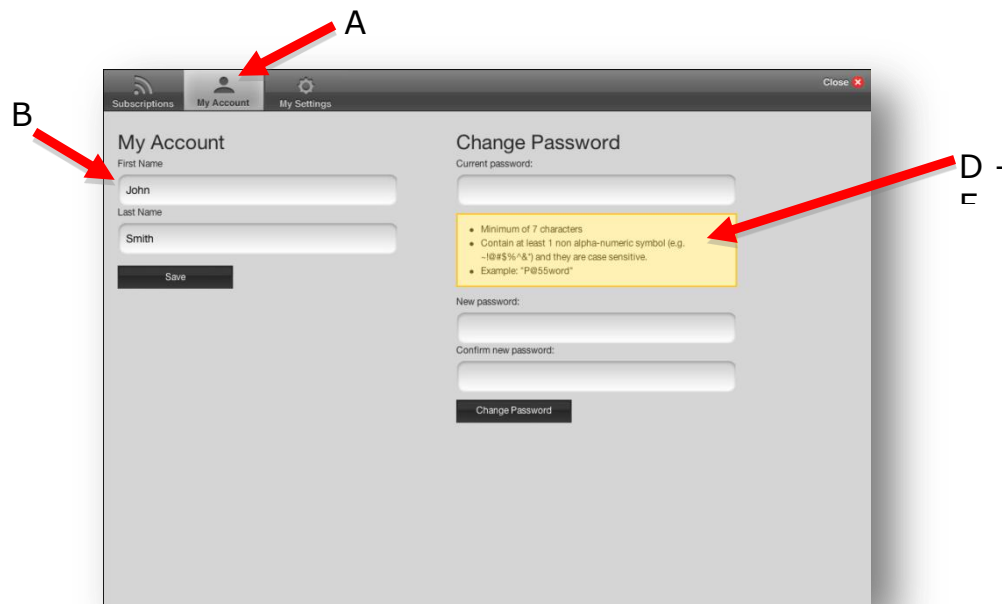
---

- C. To unsubscribe to a channel, click the channel icon in the *Channel List* that has a green checkmark or *My Channels*. When directed to *Channel Details*, select *Unsubscribe*.



# Getting Started with WonderBar

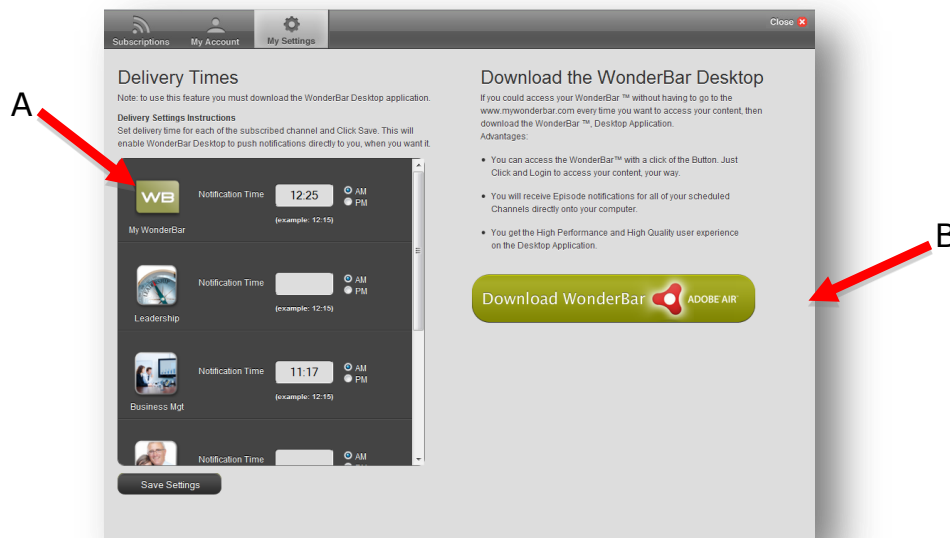
## Step 10: My Account



- A. To view or edit your account information, click the *My Account* button below any video (or select *My Account* from the top of the *Manage Channels* screen).
- B. To change your name make corrections in the text fields and click *Save*.
- C. A confirmation of the saved name change will appear above the "*My Account*" form.
- D. To change your password, enter your current password.
- E. Enter your new password following the on-screen password requirements in both the *New Password* and *Confirm New Password* fields.
- F. Click *Change Password*.
- G. A confirmation of the password change will appear above the *Change Password* form.

# Getting Started with WonderBar

## Step 11: My Settings



- A. If you want to set your delivery times for multiple channels at the same time, click the *My Settings* button below any video (or select *My Settings* from the top of the *Manage Channels* screen) and follow these steps:
  - i. Type delivery time for each of your subscribed channels in the format of HH:MM (e.g. 12:15)
  - ii. Choose AM or PM
  - iii. When all delivery times have been set, click *Save Settings*.
- B. If you want to install WonderBar™ on to your computer, while experiencing WonderBar™ through mywonderbar.com, click the *My Settings* button below any video (or select *My Settings* from the top of the *Manage Channels* screen) and follow these steps:
  - i. Click *Download WonderBar™ Desktop* green button to download the WonderBar™ Desktop Application
  - ii. When prompted, click *Open* and follow on-screen steps to install WonderBar™ (same as **Step 1** - Page 3 above in this Getting Started document).

*We work hard to make the WonderBar™ experience unique and innovative. Your feedback is appreciated and will enhance future experiences as we continue to make improvements. Please send any questions, comments and ideas to [support@mywonderbar.com](mailto:support@mywonderbar.com).*

Enjoy the WonderBar™ experience!